

Hypodermoclysis (HDC) Decision Guide

Is HDC appropriate for my resident?

(Review and assess resident's oral intake, fluid balance, vital signs, clinical signs/symptoms of dehydration, etc.)



Have all methods to provide oral hydration been exhausted?



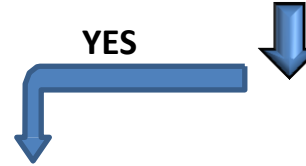
Continue assessing resident for needs and preferences and explore alternative options for hydration

YES

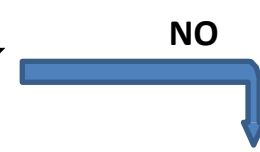


Does HDC align with Goals of Care or ACP status?

YES



NO

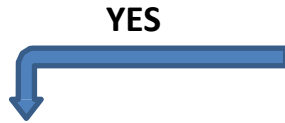


Resident meets criteria for HDC

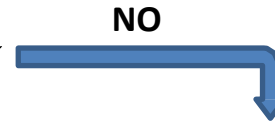
Criteria:

- Treatment of reversible condition
- Management of symptoms
- End stage disease/illness (to reverse effects of toxic metabolites of drugs)
- Resident/substitute decision maker agrees with treatment

YES



NO



Initiate HDC according to guideline:

- Maximum of 1-1.5liter/day
- Appropriate solution
- Ongoing assessment/monitoring
- Ordering/timely review of bloodwork (as needed)

Review alternative treatment options

Review Goals of Care to determine alternative treatment

