

Waste Removal (Anteroom)

Preamble

During anteroom waste management, the blue drum will be regularly assessed to determine the need for removal. This checklist assumes the **Primary+** will already be in the room.

Once the blue drum is observed to be 2/3 full, the **Primary+** will let the **Monitor** know the blue drum needs to be replaced.

The **Monitor** will record the need for a new drum on the Patient Room Supply Replenishment List and the blue drum will be changed the next time a **Primary+** enters the patient room.

Anteroom door is the door between the hallway and anteroom.

Patient room door is the door between the anteroom and patient room.

Throughout the checklist, IP&C approved disinfectant will be referred to as disinfectant.

Note: A used red pail may also be in patient room, ready to be removed from patient room as part of anteroom waste management.

PREPARATION: **Monitor** will review the following processes and pictured instructions with **Primary+**, for reference in handling the blue drum and securement ring

- Removal/attachment of securement ring. Review:
 - Staying clear of pinch points by using splayed hands at the 3:00 and 9:00 o'clock positions
 - Keeping slow control of spring-loaded arm
 - Once securement ring is in place on top of blue drum, ring may need to be rotated so spring loaded arm is closer to the **Primary+**. This helps the spring-loaded arm to be closed easily.
 - Locking mechanism, which is the top of the securement ring, needs to be engaged after placement and disengaged before removal
- Gooseneck waste bag
 - Carefully gather top of bag only handling outside of bag
 - Twist top of bag without compressing it, and fold top over to resemble a gooseneck
 - Fasten a zip tie around gooseneck
- Use of dolly
 - Maneuvering dolly
 - Use proper body mechanics
 - Ensuring correct blue drum and dolly placement allows for movement around items and the ability to open the patient room door in locked position to deliver drum to anteroom
 - Engaging kickstand
 - Engaging drum lock

Waste Removal (Anteroom)

- Ensuring disinfectant mats in anteroom are aligned so wheels contact mat and base of drum is under the mat
- Cleaning/disinfecting of blue drum
 - Use as many wipes as needed and wipe only areas you can reach without contaminating yourself through body contact
 - While blue drum is in anteroom for final wipe there will be areas out of reach: do not make body contact with the blue drum
- Glove hygiene process:
 - Immerse gloved hands into basin and rub together in IP&C approved disinfectant without splashing
 - Pat gloves dry with IP&C approved disinfectant wipe(s)
- If at any point in the process the **Primary+** has soiled scrubs, proceed to the Soiled Scrubs Checklist

Legend

Primary+
Monitor ♠
Monitor 2 ♦
Assistant 1Ω
Hallway Assistant 2 β
Waste Collector ♣

Process:

1. PREPARATION (in hallway)	
Assistant 1Ω	
	Gather supplies (new blue drum set-up) <ul style="list-style-type: none"> ● Blue drum lined with two red biomedical waste bags ● Securement ring (ensure lever is closed) ● Lid (on top of drum, but not locked in with securement ring) ● 2 red biomedical waste bags ● 1 absorbent mat ● 2 zip ties ● Review supply list: bring in additional disinfectant solution/wipes and absorbent powder if needed
	Don Assistant PPE

Waste Removal (Anteroom)

2. PREPARE WORKSPACE IN PATIENT ROOM		Considerations
Primary+		
Clear items/supplies from pathway between dolly and door		Move garbage, supply cart, etc. Remind Primary+ the Monitor is unable to observe breaches, but instruct Monitor 2 to observe at second window Caution during movements
Perform glove hygiene		
Place dolly in stand position and engage kick stand away from door to allow door opening		
Wipe down dolly from top to bottom with disinfectant wipes		
Perform glove hygiene		
Wipe down door handle and face plate of patient room door with disinfectant wipes. Discard wipes		
Allow 1-minute wet contact time		
Enter anteroom without dolly and allow door to close		

3. Assistant 1Ω		Considerations
Enter anteroom with absorbent pad(s), securement ring, and blue drum lid		
Place absorbent pad(s) on floor closest to wall by secondary disinfectant mat		
Lean securement ring and blue drum lid against wall and on top of disinfectant mat		
Disinfect top of anteroom supply cart with disinfectant wipes; discard wipes. Allow 1-minute wet contact time		
Place supplies (already in room) on table <ul style="list-style-type: none"> • 2 zip ties • 1 full bottle of disinfectant solution • 1 container of absorbent powder • Disinfectant wipes 		

4. PREPARE BLUE DRUM		Considerations
Primary+		
Remove contaminated securement ring		Place contaminated securement ring as far away from door to allow dolly to enter with enough space
Monitor reminds Primary to avoid pinch points		
Disengage lock on securement ring		
Place hands at 3:00 and 9:00 o'clock with hands splayed		
Grasp lever and open it fully		
Remove 'contaminated' securement ring Securement ring remains in the anteroom		
Place on floor, leaning up against a wall		

Waste Removal (Anteroom)

PREPARE INNER RED WASTE BAG

Assistant 1Ω to pass supplies to Primary+ throughout process

Gather top of inner waste bag only handling outside of the bag without compressing bag

Twist top of bag and create gooseneck

Secure gooseneck with a zip tie

Check gooseneck for any tearing from zip tie

Perform glove hygiene

Slowly pour ½ bottle of disinfectant solution into blue drum

- Distribute over goose necked bag to ensure surface contact, allowing solution to drain to bottom of drum
- Pass bottle back to Assistant 1Ω

Primary+ should avoid reaching across to get supplies from Assistant 1Ω's side of the anteroom

PREPARE OUTER RED WASTE BAG

Considerations

Gather top of outer waste bag only handling outside of the bag without compressing bag

Twist top of bag and create gooseneck

Secure gooseneck with zip tie

Check gooseneck for any tearing from zip tie

Perform glove hygiene

Slowly pour ½ bottle of disinfectant into blue drum

- Pour over goose necked bag to ensure surface contact, allowing solution to drain to bottom of drum
- Place empty bottle into red waste bin

Allow 1-minute wet contact time

Pour entire container (1 litre) of absorbent powder in blue drum. Place empty container into red waste bin

Primary+ and Assistant Ω perform glove hygiene

Absorbent powder will solidify all the free liquid poured into drum

SEAL BLUE DRUM

Considerations

Place the 'clean' lid onto full blue drum and press down firmly to fully seat lid on drum

Assistant 1Ω to pass 'clean' securement ring and hold it with locking mechanism on the top side

Waste Removal (Anteroom)

Page 5 of 13

Place clean securement ring on full blue drum

- Using 3:00 and 9:00 o'clock hand placement on ring, grasp lever on one hand while non-lever hand is splayed
- Open securement ring with the lever and carefully place around rim of blue drum then slowly releasing lever to close
- Ensure securement ring is correctly placed around entire rim and lid of blue drum
- With a splayed hand on the lever, push lever with palm of hand until it snaps closed
- Engage locking mechanism

Primary+ and Assistant 1Ω to perform glove hygiene

5. DISINFECT OUTSIDE OF DRUM

Considerations

Primary+ and Assistant 1Ω

Ensure red waste bin is in a location that allows both Primary+ and Assistant 1Ω to be able to discard items safely

Do not make body contact with BLUE drum

Primary+ uses as many disinfectant wipes as needed to wipe areas of drum within reach including lid

Discard wipes in red waste bin. Allow 1-minute wet contact time

Perform glove hygiene

Assistant 1Ω wipes areas of drum within reach

Primary+ and Assistant 1Ω perform glove hygiene

Primary+ to assess whether red waste bin bag is 2/3 full. If observed, Primary+ to gather red biohazard bag, and place in blue drum

Assistant 1Ω to take new red biohazard bag and place in red waste bin

To avoid body contact with blue drum, the Primary+ and Assistant 1Ω will need to continually move around the blue drum to disinfect surfaces

6. PREPARING DOLLY

Considerations

Primary+

Primary+ re-enters the patient room

Open patient room door fully to engage in hold position

Move dolly towards anteroom making sure to remain on Primary+ side

LOAD BLUE DRUM ONTO DOLLY

Move dolly toward blue drum

When feet of the dolly are against bottom of the drum, tilt dolly forward and engage drum lock

Waste Removal (Anteroom)

	Lean dolly back to allow drum to be seated in dolly	
	Backing into the patient room with the dolly, move the drum onto the Primary+ side disinfectant mat	

7. Assistant 1Ω		Considerations
	While blue drum is tipped up wipe bottom of blue drum with disinfectant wipes	
	Wipe areas of drum within reach	
	Allow 1-minute contact time	
	Perform glove hygiene	
	Move to Assistant's second disinfectant mat	

CONCURRENT WITH STEP 9	8. Waste Collector ♣	
		Don gown, gloves and face shield
		Gather supplies <ul style="list-style-type: none"> • 2 absorbent pads Bottle of disinfectant solution

9. REMOVING BLUE DRUM FROM ANTEROOM		Considerations
CONCURRENT WITH STEP 8	Primary+	
	Maneuver dolly toward Assistant 1Ω side of anteroom so when in standing position, base of blue drum is situated on Assistant 1Ω disinfectant mat	Stay on Primary+ side of anteroom at all times
	Place dolly in stand position	
	Tilt dolly forward slightly	
	Disengage drum lock to release drum onto Assistant 1Ω disinfectant mat	Remind Primary+ the Monitor♣ is unable to observe breaches Use caution during movements
	Return dolly to storage spot in patient room	
	Perform glove hygiene	

Waste Removal (Anteroom)

Page 7 of 13

	Enter anteroom	Primary+ goes back into patient room to allow for maneuvering of the blue drum in the anteroom
	Close patient room door using the green wall button in anteroom	
	Wipe areas of blue drum within reach, including top	
	Perform glove hygiene	
	Enter patient room, close door and wait for direction	

	10. Monitor ♣	Considerations
	Open anteroom door	
	Hold door open staying behind door, or 2 metres away from Waste Collector♣ and blue drum	

	11. Waste Collector ♣	Considerations
	Place 2 absorbent pads in hall in front of anteroom door. Saturate with disinfectant solution	Remind not to stabilize blue drum with hand Ensure Hallway Assistant 2β is prepared to receive drum outside of patient room door
	Do not step over anteroom threshold at any time	
	Roll collection dolly so wheels contact hallway disinfectant mat	
	Move dolly towards blue drum	
	When feet of the dolly are against the bottom of the drum, tilt dolly forward and engage drum lock	
	Lean dolly back to allow drum to be seated in dolly	
	Wheel dolly out ensuring wheels contact hallway absorbent pads	

	12. Monitor♣ , Assistant 1Ω and Hallway Assistant 2β	
NEW BLUE DRUM INTO ANTEROOM		
	Hallway Assistant 2β passes new blue drum lined with two red biomedical waste bags into anteroom	Hallway Assistant 2 β does not wear PPE
	Assistant 1Ω in anteroom places drum on Primary+ side	
	Monitor♣ to allow outside anteroom door to close	

	13. Primary+	Considerations
	Perform glove hygiene	
	Wipe down door handle and face plate to anteroom with disinfectant wipe(s). Discard wipes. Allow 1-minute wet contact time.	
	Enter anteroom	







Waste Removal (Anteroom)

	<p>Take contaminated securement ring and hold it with the locking mechanism on the top side</p> <ul style="list-style-type: none"> • Using 3:00 and 9:00 o'clock hand placement on ring, grasp lever on one hand while non-lever hand is splayed • Open securement ring with the lever and carefully place around rim of blue drum then slowly releasing lever to close • Ensure securement ring is correctly placed around entire rim and lid of blue drum • With a splayed hand on the lever push lever with palm of hand until it snaps closed • Engage locking mechanism 	<p>Ring may need to be rotated so spring loaded arm is closer to the Primary+. This helps the spring-loaded arm to be closed easily</p>
	<p>Indicate either intention to doff or remain in the patient room and provide care. Proceed accordingly</p>	

14. Assistant 1Ω	Considerations
<p>Assist Primary+ in doffing OR if primary returns to patient room, proceed to Doffing Assistant PPE</p>	

Waste Removal (Anteroom)

REPLACEMENT OF SECUREMENT RING AND DRUM LID

<p>1. Place lid on drum. Press down firmly in centre of lid to fully seat the lid on the drum</p>			
<p>2. Pick up the securement ring by grasping the lever in your left hand and placing the palm of your right hand on the outside of the ring, opposite the lever (at 0900 and 1500, respectively)</p>			
<p>3. Ensure fingers are free of pinch points and open the lever fully, holding it open under tension</p>			
<p>4. Position the securement ring around the lid, seating the lever side firmly against the lid</p>			<p>Seat firmly against lid</p>
<p>5. Ensure fingers of right hand are splayed out, and slowly release lever, allowing the securement ring to tighten onto the drum lid</p>			

Waste Removal (Anteroom)

Page 10 of 13

6. Ensure the securement ring is uniformly seated around both the drum lid and the rim of the drum



7. Using your opened palm of the left hand (**with fingers splayed out**), firmly press the lever closed until it snaps into the closed position



8. Engage safety lock on the lever



Waste Removal (Anteroom)

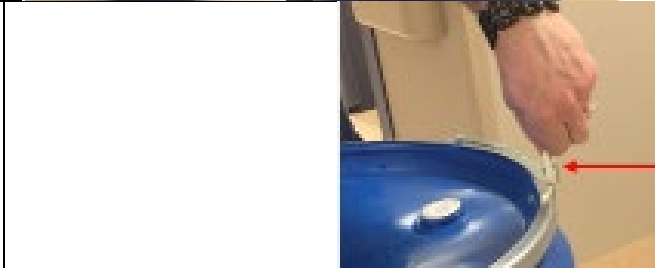
REMOVAL OF SECUREMENT RING AND DRUM LID

1. Stand facing the drum with the opening lever to the left side and at the 0900 position



Lever to left side at 0900 position

2. Release the safety lock on the lever

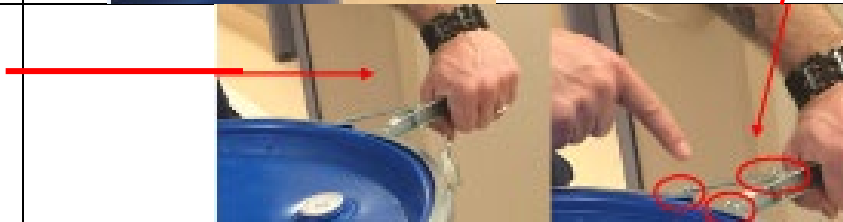


3. Pull open lever



Watch pinch points

4. Grasp lever with your left hand with an overhand grip, keeping fingers away from pinch points




5. Place palm of right hand (**with fingers splayed out**) on outside of securement ring, opposite the lever



Caution! Pinch point under securement ring; keep fingers splayed out

Waste Removal (Anteroom)

<p>6. Pull lever fully open and lift securement ring off the drums (in the open position, the lever will be under tension and must be held in the fully open position)</p>	
<p>7. Slowly release lever back to its neutral position</p>	
<p>8. Place the securement ring in designated area</p>	
<p>9. Remove drum lid and place in designated area</p>	

Waste Removal (Anteroom)

Gooseneck:

