



WRHA
Emergency
Department/
Urgent Care Ebola
Virus Disease (EVD):
Clinical Process
Algorithm

PATIENT Presents to Non-Designated ED or Urgent Care

ASK PATIENT in the last 21 days:

1. Have you traveled from an outbreak-affected area? *

AND/OR

2. Have you been in contact with an Ebola Virus Disease (EVD) case? *

AND/OR

3. Have you been advised to self-monitor for Ebola Virus Disease (EVD)?

STOP EVD Screening
 Complete triage per CTAS guidelines

Instruct patient and anyone accompanying the patient to perform hand hygiene and put on a mask.
 Use a **"no touch"** approach.

Ask about any signs and symptoms that began within **21 days** of travel or potential exposure (any of the following):

- Fever
- Malaise/intense weakness
- Diarrhea
- Myalgia
- Nausea/vomiting
- Headache
- Rash (chest, back, stomach)
- Jaundice
- Sore throat
- Chest pain

Is the patient stable?

Escort patient & anyone accompanying the patient to a designated isolation space using a **"no touch"** approach.

Instruct patient to pick up the phone in the room when it rings.

Notify MD **immediately**

MD conducts in-depth history via room telephone

- MD contacts Attending ID Specialist†; state call is Ebola-related
- Site contacts Site Infection Prevention & Control ‡

ID Specialist consult confirms a Person Under Investigation

Stop EVD measures; consider other infectious conditions

INITIATE TRANSPORT ARRANGEMENTS

- Site** contacts Regional Director for Patient Transport (204) 794-2192 **AND**
- EMS (204) 986-6336 and advise of EVD potential with need for *non-emergent* transport to JK3/PICU at HSC
- Inter-facility transfer team provides ETA to sending and receiving sites

WFPS/IFT scheduled transfer occurs after coordination with HSC

Site terminal clean done by HSC HSKG; call (204) 787-3308

Site to contact HSC Central Support Services Director

- Monday-Friday (0800-1600) at (204) 612-7795 or through HSC paging (204) 787-2071
- Outside of "regular business hours" site to contact the HSC Nursing Supervisor through HSC paging (204) 787-2071

Patient transported to JK3/PICU for definitive testing and treatment (patient will bypass HSC ED)

No touch approach: HCW shall:

- Keep distance of 1-2 meters
- Not have any physical contact with the person, including during medical emergencies (e.g., person collapses)
- Not conduct any physical examinations
- Not perform in depth interview until person is isolated and a telephone can be used
- Not come into contact with any blood or body fluids (including cleaning the environment)

Patient collapses prior to arriving at designated space. Secure area where patient has collapsed– remove all persons from affected area. Notify MD **immediately**

Utilize **"NO TOUCH"** approach

If possible MD gathers history from the patient and/or accompanying persons while maintaining a "no touch" approach

INITIATE EMERGENT TRANSPORT ARRANGEMENTS

- Site contacts Regional Director for Patient Transport (204) 794-2192 **AND**
- EMS (204) 986-6336 and advise of EVD potential with need for **emergent** transport to JK3/PICU at HSC

- MD contacts Attending ID Specialist†; state call is Ebola-related
- Site contacts Site Infection Prevention & Control‡

WFPS emergency transfer occurs after coordination with HSC

†Attending Infectious Diseases Specialist:

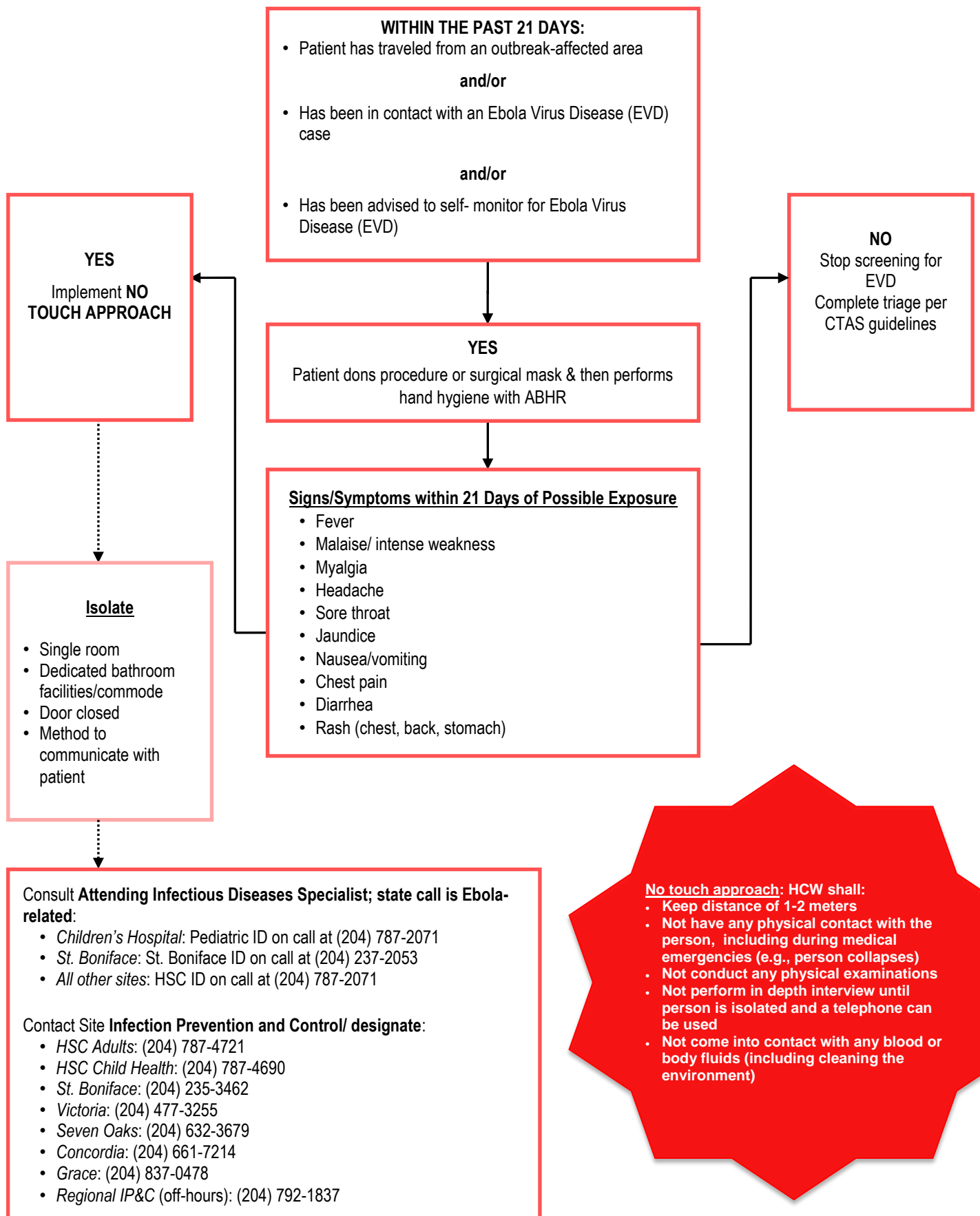
- Children's Hospital: Pediatric ID on call: (204) 787-2071
- St. Boniface: St. Boniface ID on call: (204) 237-2053
- All other sites: HSC ID on call: (204) 787-2071

‡Site Infection Prevention and Control/ designate:

- HSC Adults: (204) 787-4721
- HSC Child Health: (204) 787-4690
- St. Boniface: (204) 235-3462
- Victoria: (204) 477-3255
- Seven Oaks: (204) 632-3679
- Concordia: (204) 661-7214
- Grace: (204) 837-0478
- Regional IP&C (off-hours): (204) 792-1837

*Current affected areas may be found at: <https://www.who.int/ebola/en/> The current outbreak map may be found at: <http://www.wrha.mb.ca/extranet/evd/files/DRC-2018-19.pdf>
 WHO Ebola Dashboard – DRC – 2018/19: <https://who.maps.arcgis.com/apps/opsdashboard/index.html#/e70c3804f6044652bc37ccee/d8fcef6c> Jul 08 19

IP&C Ebola Virus Disease (EVD) Algorithm



Ensure the following triage measures are in place:

- Direct patients to appropriate care area in a 'no touch' manner and initiate necessary IPC measures
- Post Respiratory Hygiene/Cough Etiquette and EVD signage
- Create and maintain a physical barrier between infectious sources and susceptible hosts
- Supply required items for respiratory hygiene (e.g., masks, tissues, alcohol-based hand rub, designated hand washing sinks with hand soap, and no-touch waste receptacles)
- Appropriately clean and disinfect Triage area once patient leaves area.