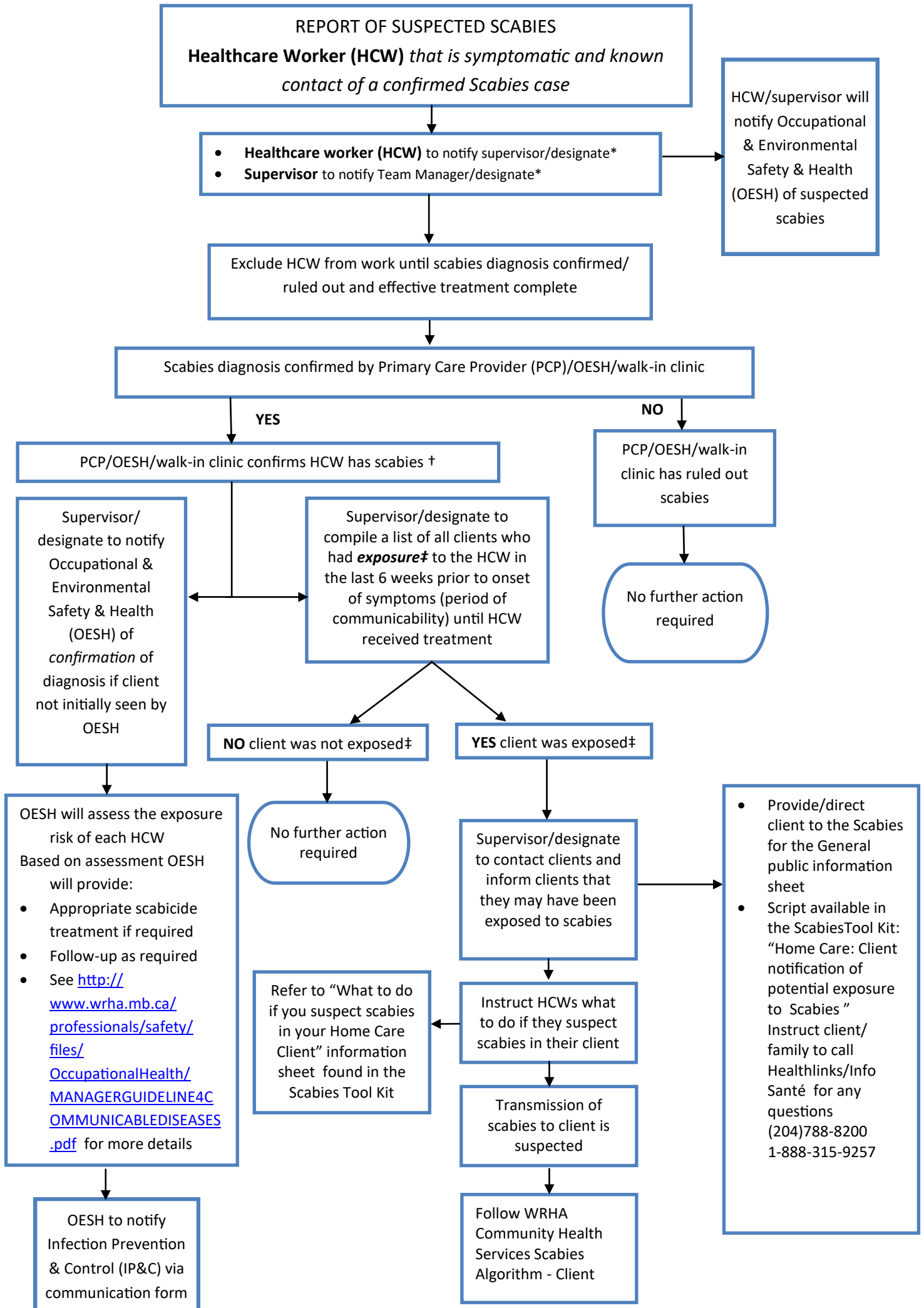


WRHA Community Health Services SCABIES ALGORITHM—HEALTHCARE WORKER



*Supervisor/Team manager/designate can contact WRHA Community Infection Prevention & Control for resources on client management and/or OESH for resources on HCW management

†If diagnosis is confirmed as crusted (Norwegian) scabies Public Health must be consulted for case management (204)940-2081

‡In typical scabies exposure of the HCW is when (s)he has had **prolonged direct skin to skin contact** with the client, or **prolonged direct contact** with the client's bedding, undergarments or pajamas and no personal protective equipment was used. (e.g.: dressing, bathing, laundry, transferring etc)

In crusted (Norwegian) scabies exposure of the HCW can occur with casual contact

- Consider an outbreak if there is evidence of transmission.
- Consult Public Health if an outbreak is suspected