

# Nutrition for ICU Patients

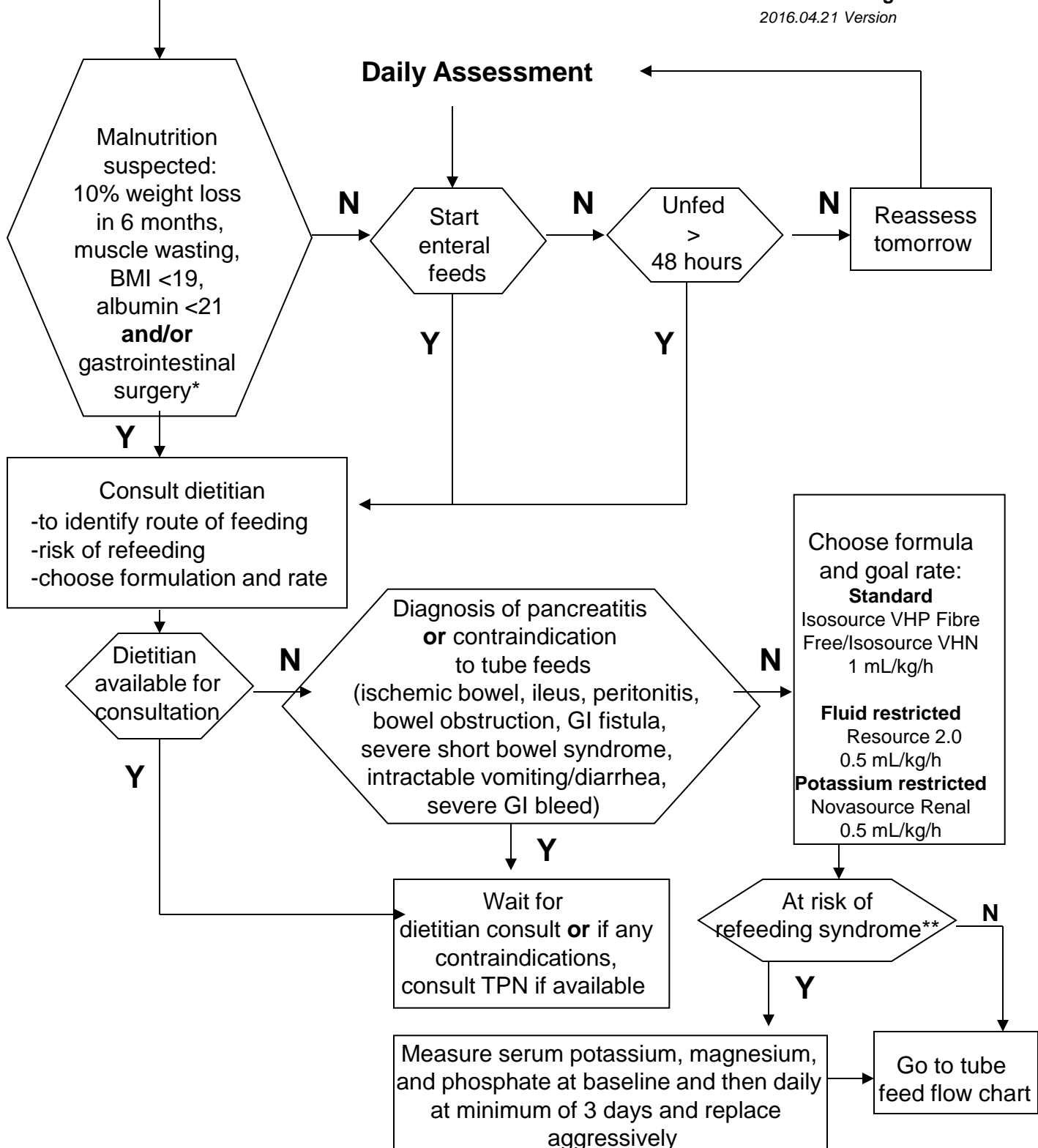


Winnipeg Regional Health Authority

Critical Care Program

2016.04.21 Version

## ICU Admission



\*Consult surgical service to determine if enteral feeds can be initiated

\*\*Risk of refeeding syndrome if: NPO for > 7 days, >10% weight loss in 6 months, evidence of muscle wasting, body mass index <19 (BMI=weight(kg)/height(m)<sup>2</sup>), serum albumin <21g/L