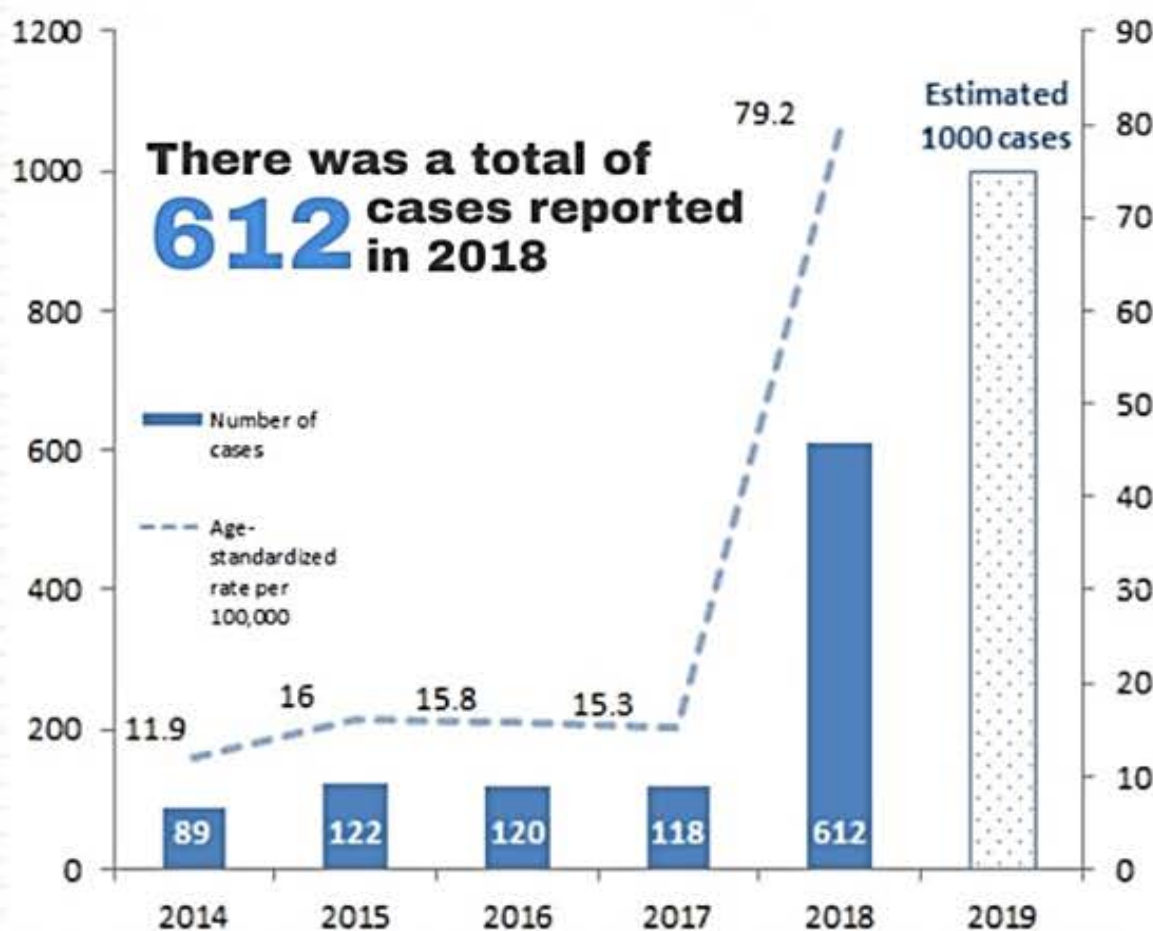


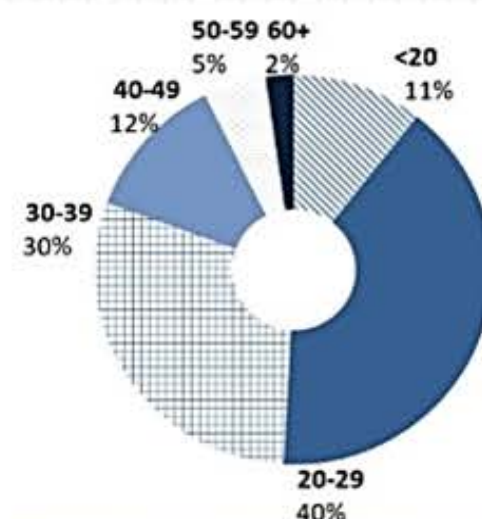
# Syphilis Outbreak among Winnipeg Health Region Residents

## 2018 Cases Update

Cases have been rising & increased **4X** from 2017 to 2018



There was a total of **612** cases reported in 2018

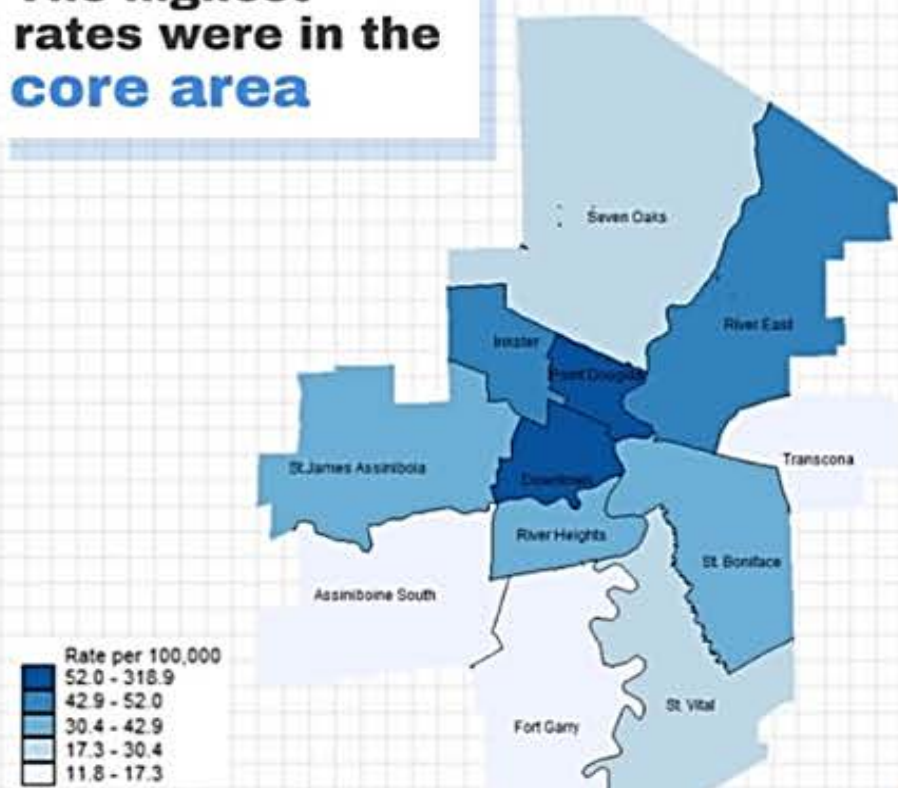


The highest proportion of cases were among **20-29 yr olds**

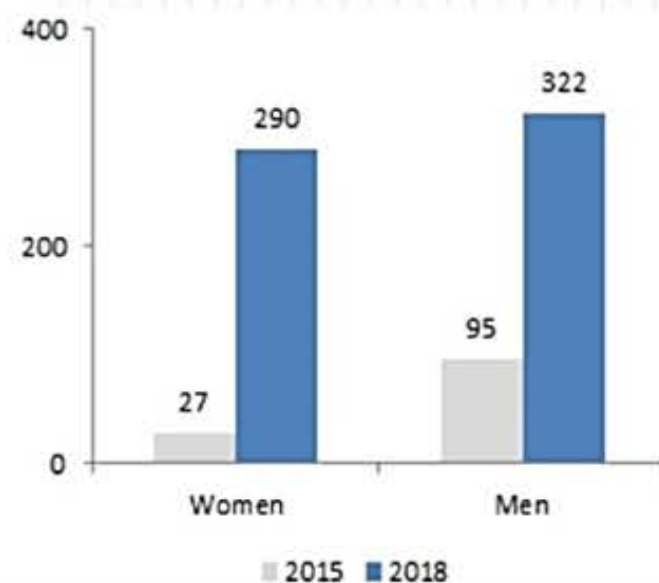
Heterosexual transmission accounted for **77%**



The highest rates were in the **core area**

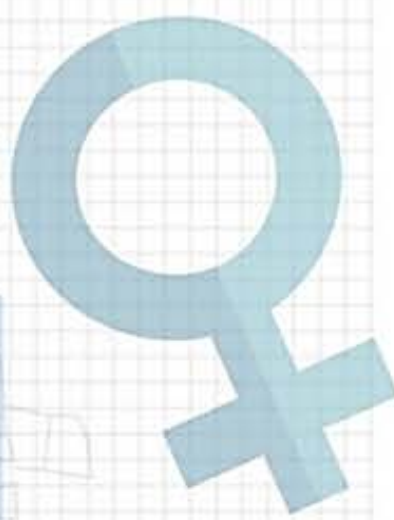


Compared to 2015, the number of **women** with syphilis increased **10X** & the number of **men** with syphilis increased **3X**



Syphilis among women is occurring in every community area & increasing in almost every community area

The bulk of cases are occurring in the **core area**



**Congenital syphilis cases have been increasing**



**5 cases** in 2018



**9 cases** in 2019...



... & counting