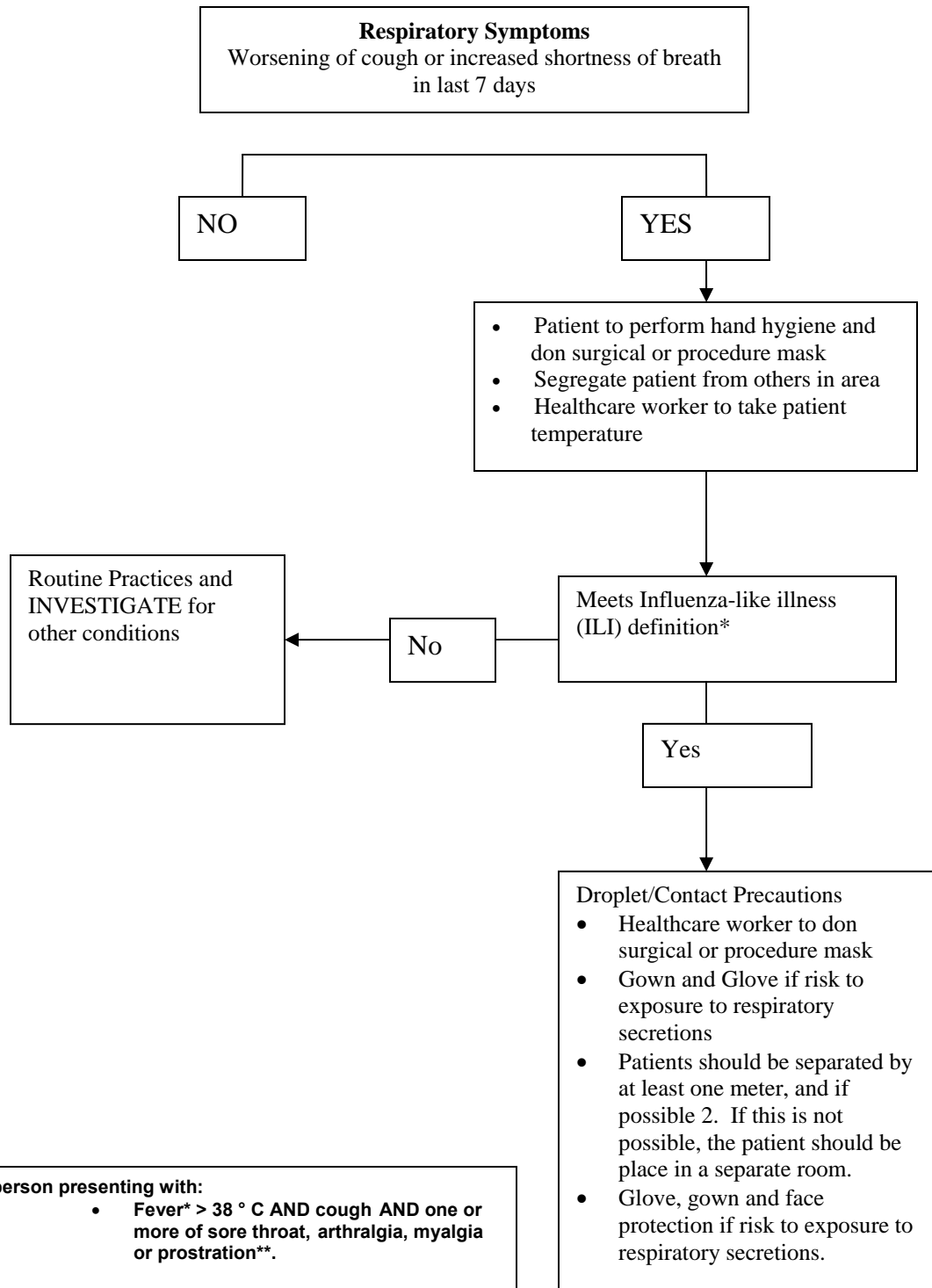


**Point of Entry Infection Screening for Health Care Settings**

Health care worker (HCW) to maintain one metre or if possible 2 metres distance from patients until respiratory symptoms determined



**\*A person presenting with:**

- **Fever\* > 38 ° C AND cough AND one or more of sore throat, arthralgia, myalgia or prostration\*\*.**

**\*In patients < 5 or ≥ 65, or in those receiving corticosteroids, fever may not be prominent.**

**\*\*In children < 5 years of age, gastrointestinal symptoms may also be present. Cough may not be prominent in young children.**